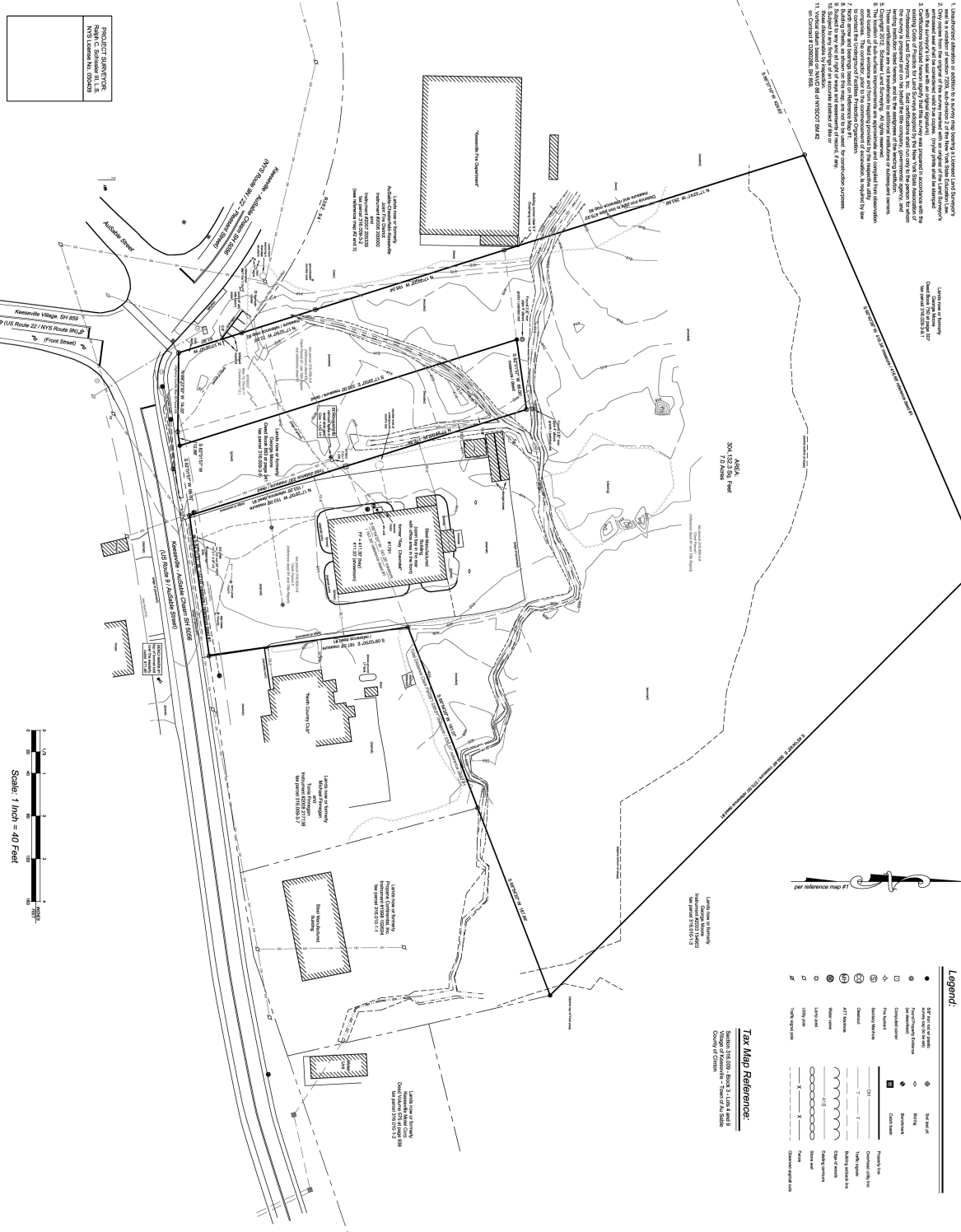


Map Notes:

1. Unshaded areas of asphalt to be marked with yellow 2.5 inch wide and 4 inch long rectangular markings for safety.
2. Shaded areas of asphalt to be marked with white 2.5 inch wide and 4 inch long rectangular markings for safety.
3. Open areas to be paved with concrete.
4. Existing paved areas to be resurfaced with 4 inch thick concrete.
5. Existing paved areas to be resurfaced with 4 inch thick concrete and to be marked with yellow 2.5 inch wide and 4 inch long rectangular markings for safety.
6. Existing paved areas to be resurfaced with 4 inch thick concrete and to be marked with white 2.5 inch wide and 4 inch long rectangular markings for safety.
7. Existing paved areas to be resurfaced with 4 inch thick concrete and to be marked with yellow 2.5 inch wide and 4 inch long rectangular markings for safety.
8. Existing paved areas to be resurfaced with 4 inch thick concrete and to be marked with white 2.5 inch wide and 4 inch long rectangular markings for safety.
9. Existing paved areas to be resurfaced with 4 inch thick concrete and to be marked with yellow 2.5 inch wide and 4 inch long rectangular markings for safety.
10. Existing paved areas to be resurfaced with 4 inch thick concrete and to be marked with white 2.5 inch wide and 4 inch long rectangular markings for safety.
11. Existing paved areas to be resurfaced with 4 inch thick concrete and to be marked with yellow 2.5 inch wide and 4 inch long rectangular markings for safety.



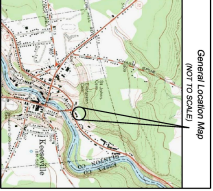
Legend:

- Symbol for road
- Symbol for driveway
- Symbol for parking
- Symbol for building
- Symbol for utility
- Symbol for fence
- Symbol for tree
- Symbol for water
- Symbol for spot elevation
- Symbol for spot elevation
- Symbol for spot elevation
- Symbol for spot elevation
- Symbol for spot elevation
- Symbol for spot elevation

Tax Map Reference:

Town of Ausable
Village of Ausable
County of Warren

PROJECT SURVEYOR
NAME
STATE LICENSE NO.



Lipstate Design Associates, LLC
 Consulting Engineers
 100 Park Ave. E.
 3rd Floor
 Port Jervis, New York
 13450
 518-836-8068 (Fax)
 updates@lipstate.com
 updates@lipstate.com / com

REVISIONS

NO.	DATE	DESCRIPTION

Map showing
Topographic Survey
 of certain lands of
TOWN OF AUSABLE
**Town Hall and Highway
 Garage Complex**
 Situate
 Route 9 / North State Street
 Town of Ausable
 Chatham County
 State of New York

131 683 NYS ROUTE 9N
 PO BOX 324
 LAKE NEW YORK 12844
 518-836-8068 (Fax)
 INFO@SCHEIDTPLUSINVESTING.COM
 SCHEIDTPLUSINVESTING.COM

Project No. 2012-080
 Sheet No. 2
 Survey Date 10/09/12
 Map Scale 1" = 40'
 Drawn R.C.S.
 Checked R.C.S.
 Scale 1" = 40'